



# PZTO30 Rotary Torque Transducer

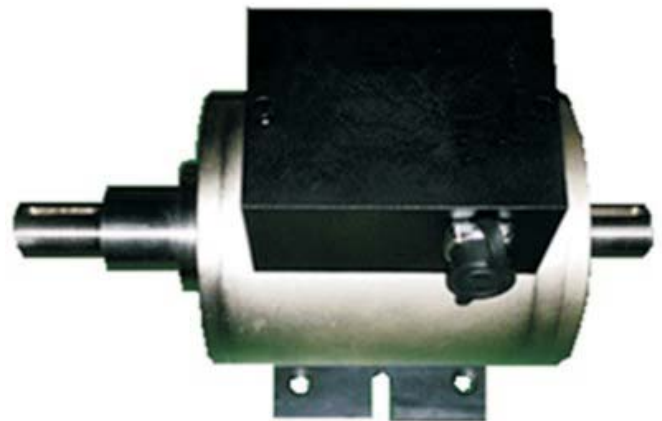
## Description

The model PZTO30 rotary torque transducer is designed for low torque measurements. This model features no electric brush between the rotor and stator by applying the electromagnetic induction principle. The no-contact nature of the signal transfer can eliminate the need of maintenance, which makes the transducer capable of operating under high speed for a long time. Moreover, the transducer is also widely used to measure viscous forces.

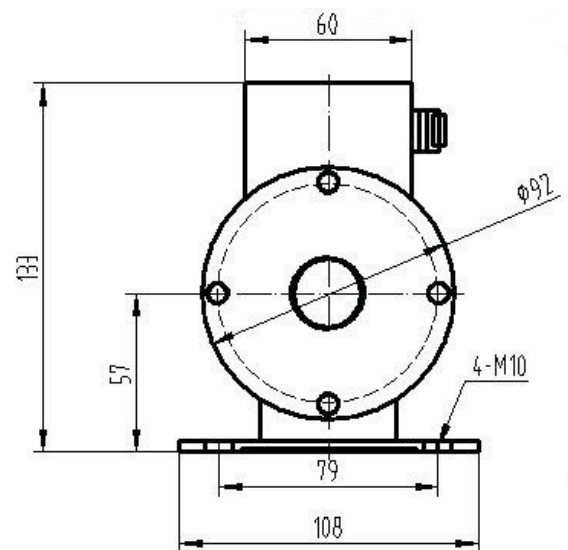
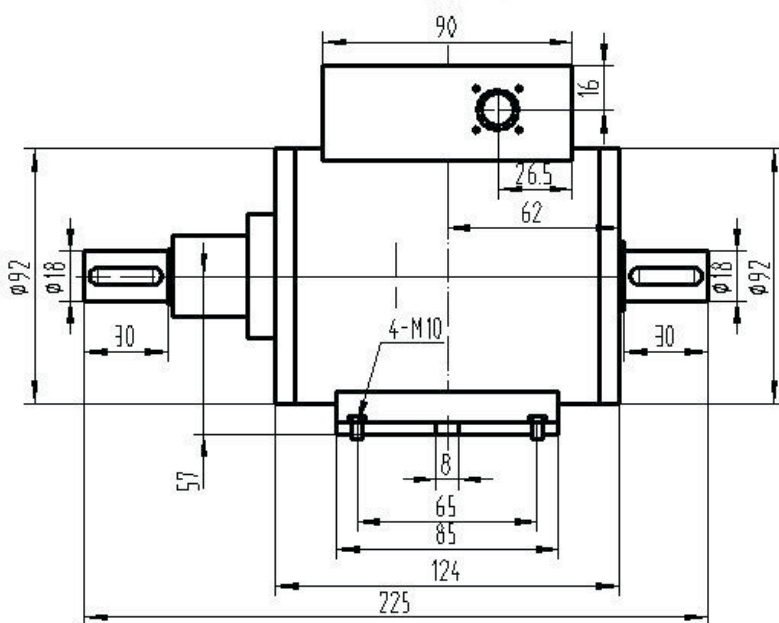
The measuring torque capacity spans from 0.1Nm to 5Nm with accuracy of 0.5%fs. Its output signal is standard amplified signal 0-5V, 1-5V, 0-10V or 4-20mA. The transmitter can be coupled with an integrated speed sensor on request, and its tachometer wheel measures the rotational speed up to 60 pulses per round, the 0-5V, 1-5V, 0-10V or 4-20mA output signal is available for speed sensor.

## Features:

- 0.1Nm, ..., 5Nm capacity
- Maximum rotation speed of 3000rpm
- 0.5%fs measuring accuracy
- speed measurement available on request



## Dimensions



## Proza Electronic Technology



# PZTO30 Rotary Torque Transducer

## Specifications

Parameters	Units	Data
capacity	Nm	0.1, ..., 5
safe overload	%fs	120
ultimate overload	%fs	150
output signal	/	0-5V, 1-5V, 0-10V or 4-20mA
accuracy	%fs	±0.5
max. rotation speed	rpm	3000
speed measurement ( option )	pulse/round	6~60 ( standard), 0-5V, 1-5V, 0-10V or 4-20mA is optional.
power supply	Vdc	12~36, 5, 10
current consumption	mA	<200
response time	ms	0.1
storage temp. range	°C	-20 ~ +70
operating temp. range	°C	-10 ~ +50 ( standard ), -40 ~ +85 is optional.
temp. coefficient of zero	%fso/°C	±0.2
temp. coefficient of span	%fso/°C	±0.2
material	/	Shaft = 40CrNiMo, Housing = nickel-plated sandblasted 45# steel
environment protection	/	IP 65
mechanical interface	/	refer to the dimensions drawing
electrical interface	/	pin connector with detachable mating socket and PVC cable
unit weight	kg	~1

For customized capacity, please consult Proza.

## Ordering Guide

### ordering code:

model-capacity-other requests-(customized parameter, if any)

### example:

PZTO30-1Nm-with speed measurement