



# PZTO11 Static Torque Transducer

## Features

- Strain gauge technology
- Range from 1 Nm to 200 Nm
- Accuracy up to 0.1%fs
- Alloy steel
- Environment protection IP67



## Applications

- Torque wrench and torsion measurement of shaft
- Vehicle testing

## Specifications

Parameter	Units	Data
measuring range	Nm	1, 2, 5, 10, 20, 50, 100, 200
safe overload	%fs	120
ultimate overload	%fs	200
output sensitivity at fs	mV/V	1~1.5
zero unbalance	%fso	≤ ±1
combined error	%fs	0.1, 0.25 (standard)
creep error (30 min.)	%fs	±0.1~±0.3
excitation (supply voltage)	Vdc	10 (typical), 5, ..., 12
max. excitation voltage	Vdc	15
input resistance	Ω	750 ±30
output resistance	Ω	700 ±5
insulation resistance	MΩ	≥ 5000@50 Vdc
storage temp. range	°C	-35 ~ +65
operating temp. range	°C	-20 ~ +65
compensated temp. range	°C	-10 ~ +40
temp. coefficient of sensitivity	%fso/10°C	±0.1~±0.3
temp. coefficient of zero	%fso/10°C	±0.1~±0.3
load cell body material	/	Alloy steel
mechanical interface	/	refer to the dimensions on the datasheets
electrical interface	/	Φ5.7mm, 4-conductor shielded, PVC jacket, length: 13m
environment protection	/	IP67

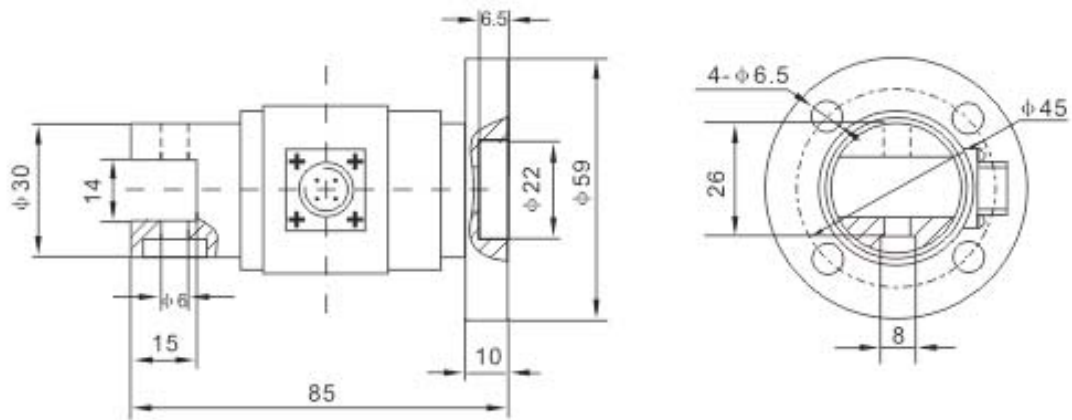
For customized measuring range, please consult Proza.

## Proza Electronic Technology

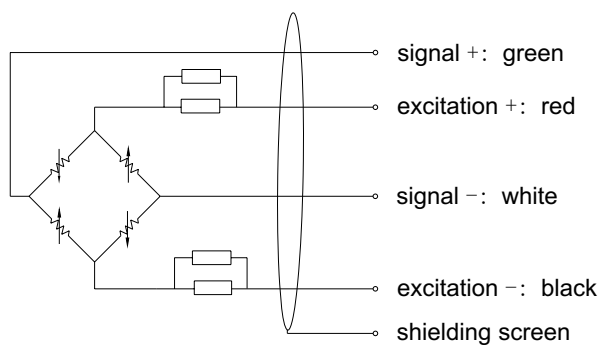


# PZTO11 Static Torque Transducer

## Dimensions



## Electrical connection



## Ordering Guide

### ordering code:

model-measuring range-output sensitivity-accuracy-cable length-(\*customized parameter)

### example:

PZTO11-50Nm-1mV/V-0.25%fs-13m

## Proza Electronic Technology